

1. Go to <http://192.168.0.1/fs/registration/setup.html>

You should see the screen below.



DIRECWAY Setup

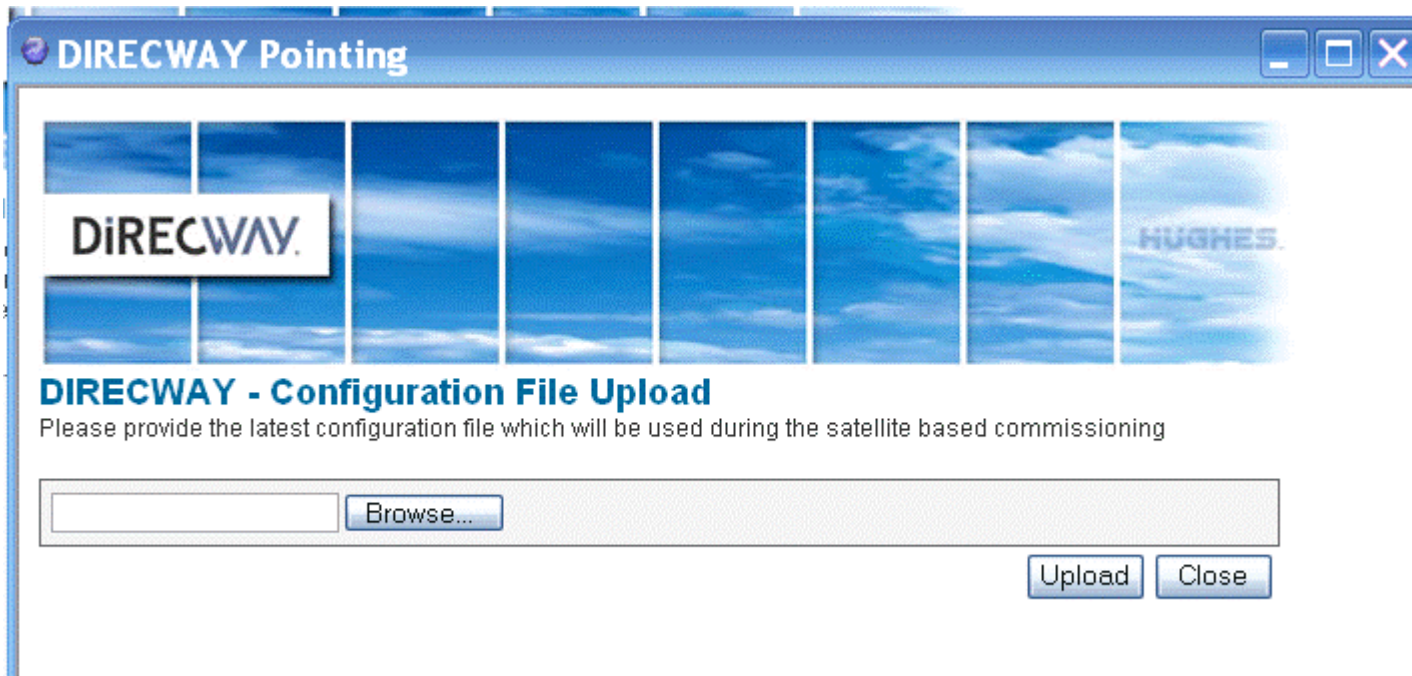
Welcome to DIRECWAY Setup. Use the links below to register your DIRECWAY terminal or point the outdoor antenna. Please note that certain functions shall be disabled during this process. Make sure that your DIRECWAY terminal restarted once you complete the Setup process.

Registration - Installer	Use this option if you are an installer and are commissioning a new terminal.
Registration - User	Use this option if you have a Registration Id and your antenna is already pointed.
Re-registration	Use this option if your terminal is already commissioned and you would like to update your account.
<hr/>	
Antenna Pointing	Use this option if you would like to run pointing or ACP on your current setup.
Manual Commissioning	Use this option if you are an installer and would like to manually commission your remote.
<hr/>	
Config File Upload	Use this option to upload a new registration configuration file.
Zip Code File Upload	Use this option to upload a new Zip Code file.

Close

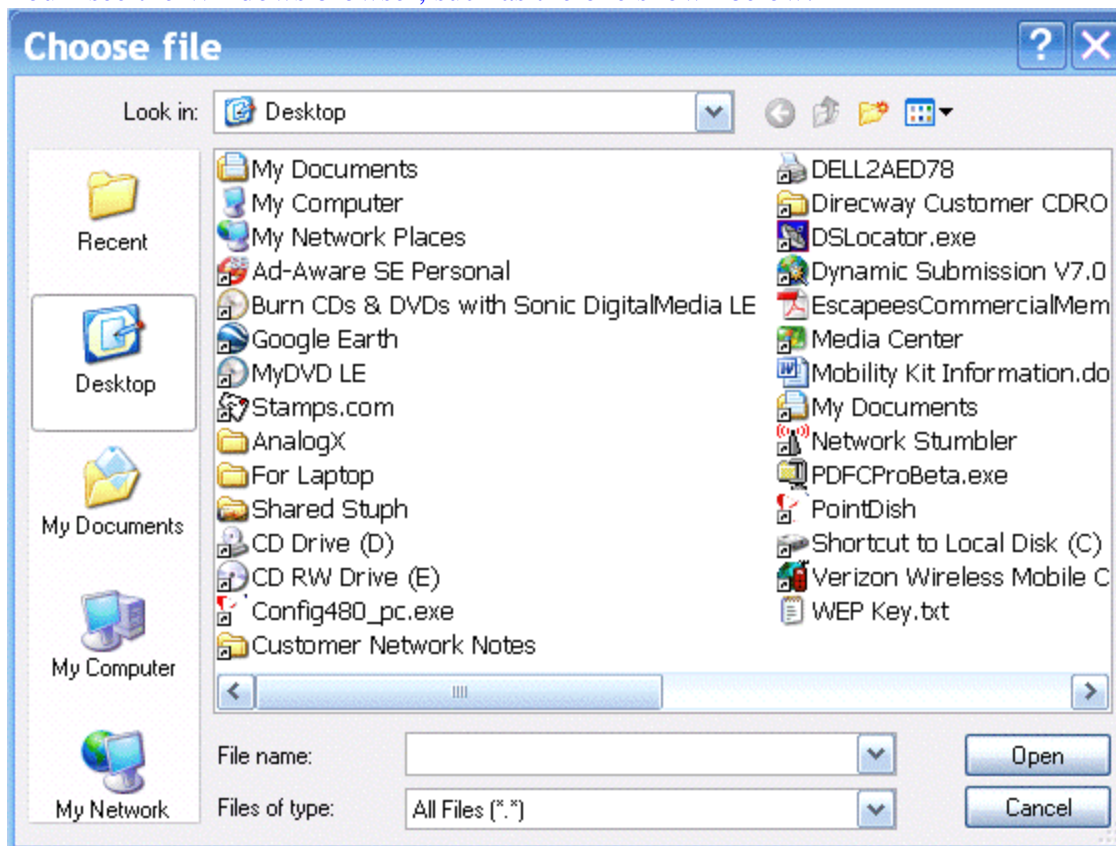
2. Click on **Config File Upload**.

You should see the screen below:



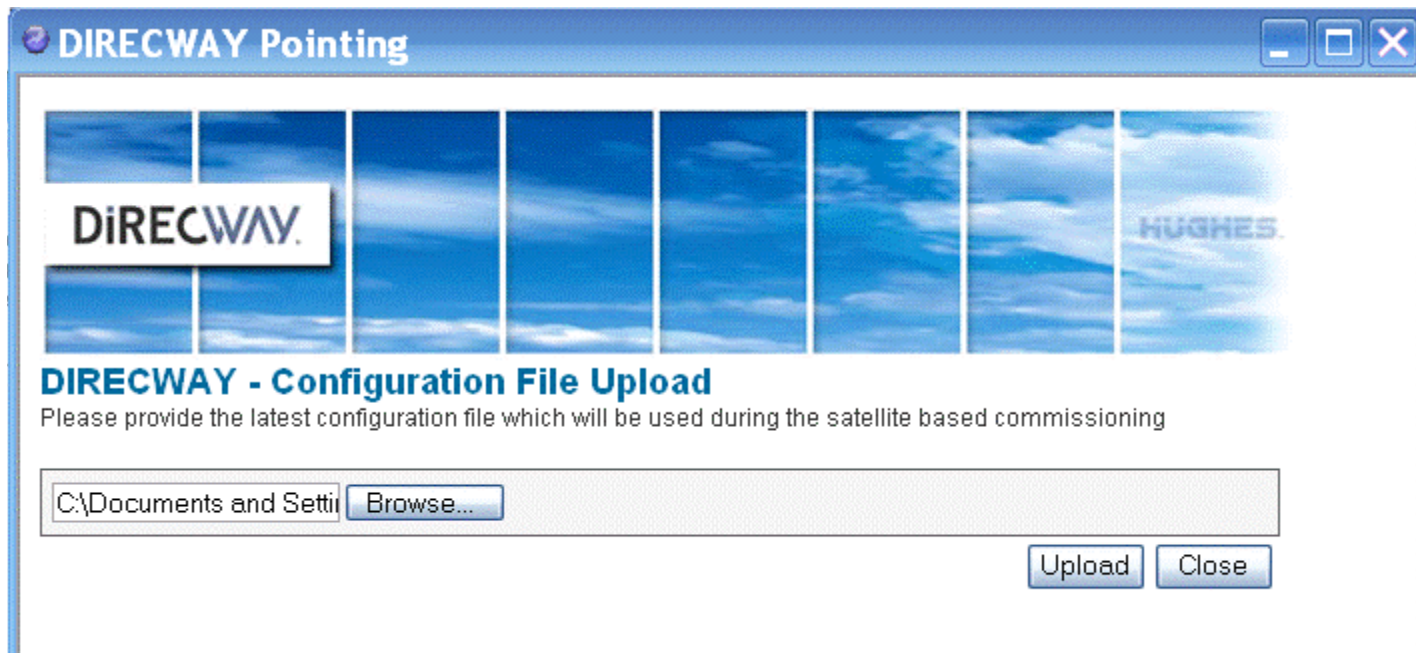
3. Click "**Browse**".

You'll see the Windows browser, such as the one shown below:



4. Browse to where you saved the file and click "**Open**".

You should see the screen shown next:



5. Click "**Upload**".