

Configuring IP Addressing

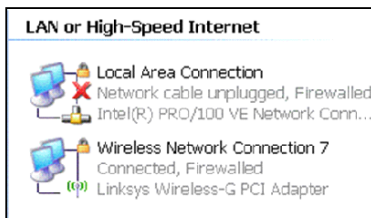
December 13, 2014

Configuring IP Addressing

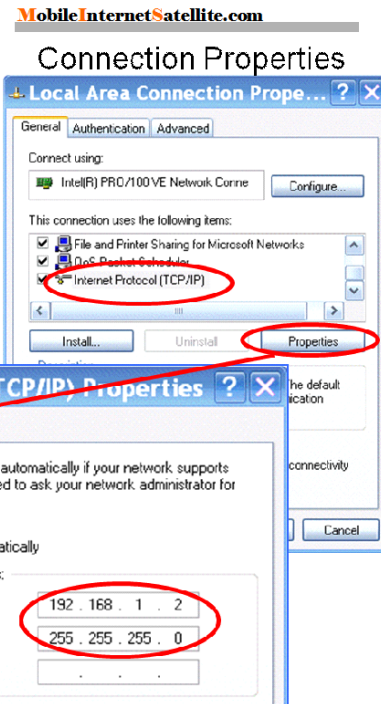
All Programs => Accessories => Command Prompt

```
Ethernet adapter Local Area Connection:  
Connection-specific DNS Suffix . : Intel(R) PRO/100 VE Network Conn  
Description . . . . . : Intel(R) PRO/100 VE Network Conn  
Physical Address . . . . . : 00-12-3F-6F-9C-C5  
Dhcp Enabled . . . . . : Yes  
Autoconfiguration Enabled . . . . . : Yes  
IP Address . . . . . : 148.XX.XX.166  
Subnet Mask . . . . . : 255.255.255.252  
Default Gateway . . . . . : 148.XX.XX.163  
Dhcp Server . . . . . : 148.78.249.200  
DNS Servers . . . . . : 148.78.249.201  
Lease Obtained . . . . . : Wednesday, April 25, 2007 3:41:11 AM  
Lease Expires . . . . . : Wednesday, April 25, 2007 5:41:11 AM
```

StarBand® Online IP Addresses



Windows Network Connections



Introduction

Before your StarBand® Nova modem is commissioned and sometimes when it is offline, it will only respond to an IP address of **192.168.1.1**. To communicate with the modem, you must statically configure an IP address for your PC's Ethernet. You should configure the IP address **192.168.1.2**, with a subnet mask of **255.255.255.0**.

Your StarBand® Nova modem uses a second IP address, when it is online. It is the IP address assigned to your modem on the StarBand network. Your modem will, in turn, assign an IP address to the PC or router connected to it via an Ethernet cable. The IP address assigned will be equal to the modem's IP address plus "1". You can see this information if you go to a Command prompt window and issue the **ipconfig** command. This is shown above, on the top, left.

Configuring IP Addressing on an Ethernet Adapter - Windows XP

If you need to communicate with your modem when it is offline, you will need to directly connect your PC to the modem with an Ethernet cable and configure an IP address on your PC. Use the following steps, to do this:

-
- Step 1** Right-click the **Network Connections** control panel and select **Open** from the drop-down menu. Or select **Show all connections** from the **Connect to** drop-down menu. Which ever path you take, you should see something similar to that shown at the bottom left above.
 - Step 2** Locate the connection icon for the Local Area Ethernet adapter through which you connect to the modem. Make sure the connection is enabled. The modem should be OFF at this stage, so the connection should have a red X.
 - Step 3** Right click the connection icon and select **Properties** from the drop down menu. You will then see the connection properties window, shown above at the top right.
 - Step 4** Click to highlight **Internet Protocol (TCP/IP)** or **Internet Protocol version 4 (TCP/IPv4)** and click the **Properties** button. You may have to scroll down through the **'This connection uses the following items:'** list to locate this entry.
 - Step 5** Configure the static IP address and subnet mask under the **General**, tab as shown above on the lower right.
 - Step 6** Click **OK** until you are back in the **Network Connections** window.

Configuring IP Addressing on an Ethernet Adapter - Not Windows XP

Things will be similar, but not exactly the same for other operating systems, including other versions of Window.

Windows Vista or Windows 7

Open the **Network and Sharing Center** control panel. Then, click on **Manage Network Connections** (Vista) or **Change adapter settings** (Windows 7) on the left, to go to the **Network Connections** window. Continue with Step 2 under the Windows XP instructions.

Windows 8

Pull the task bar out from the right edge of the screen. Click on the magnifying glass and search on *"network and sharing"*. Click to open the Network and Sharing Center. Then, click on **Change adapter settings** on the left and continue with Step 2 under the Windows XP instructions.

Macintosh

For information about configuring a Macintosh, please see the document *Using a Macintosh with StarBand*.

Note You must reverse the above configuration once your modem is online. Open the Connection Properties, as described above. Then, click the button to **Obtain an IP address automatically** and verify that on the bottom of the window, the button is selected to **Obtain DNS server address automatically**.

If you forget to do this, your PC will not be able to surf the web!
